

BUILDING PROFILE

COATC - Building 125



831 Irving-Wick Dr. W, Heath, OH 43056

Sale Price: not for sale
(Price In USD @ \$1 per \$1 USD)

Lease Price: \$750 per month
(Price In USD @ \$1 per \$1 USD)



Building Area

Total Area (sq. ft.): 1,750
Office (sq. ft.): 275

Max. Available (sq. ft.): 0

Min. Available (sq. ft.): 0

Location Details

Total Acres:
In City Limits: Yes

Additional Acres:
Type of Park: Industrial

Zoning: M-2

Building Features

Year Built: 1992
Floor: Concrete
Dimensions: 49x36
Min. Ceiling Height (ft.): 8
Truck Docks:
Cranes:
Building Type: Industrial

Condition: Excellent
Walls: block
Bay Size:
Max. Ceiling Height (ft.): 14
Drive-In Doors:
Lot Parking Spaces:

Former Use: Office/Manufacturing
Roof: EPDM (Rubber)
Column Spacing:
Multi-tenant: No
Sprinklered: No
Lighting Type:

Utilities

Electric

Service Provider
No Electric Providers Listed

Primary Voltage

Delivery Voltage

Gas

Service Provider
The Energy Cooperative - NGO

Main Size (in.)
8

Pressure (psi)
250

Water

Service Provider
Heath Municipal

Main Size (in.)
12

Sewer

Service Provider
Heath Municipal

Main Size (in.)
8

Telecommunications

Service Provider
Windstream Communications

Switching
Digital

Type of Service

Fiber Optic
Yes

Transportation

Highways

Name	Distance (mi.)
SR 16	3
SR 79	1

Interstates

Name	Distance (mi.)
I-70	6

Railroads

Name	Siding	Distance (mi.)
CSX Transportation	Yes	
Ohio Central Railroad	Yes	

Airports

Name	Distance (mi.)
Newark-Heath Airport	1
Port Columbus International Airport	33
Rickenbacker International	45

Water Ports

Name	Distance (mi.)
Ohio River - Reedsville	102

Tax Structure

(Currency Values In USD @ \$1 per \$1 USD)

State Taxes

Corporate Income Tax: Yes

Corporate Franchise Tax: No

Sales Tax: 5.5 %

Gasoline Tax (cents per gallon): 28

State Tax Web Site: <http://tax.ohio.gov/>

County/Entity Taxes

Sales Tax: 1.5%

Income Tax:

Tax	Rate	Assessment	Unit
Real Estate			
Personal			

Community Taxes

Tax District: Heath City - Heath City SD

City Sales Tax: 0%

Municipal Income Tax: 1.5%

Tax	Rate	Assessment	Unit
Total Real Property Tax For District	\$46.20898	35%	1000
Total Tangible Pers. Prop. Tax For Dist.	\$66.1	12.5%	1000

Incentives

Incentives Possible: Yes

Enterprise Zone: Yes

Empowerment Zone:

Foreign Trade Zone:

Specialized Zone: Yes

Comments

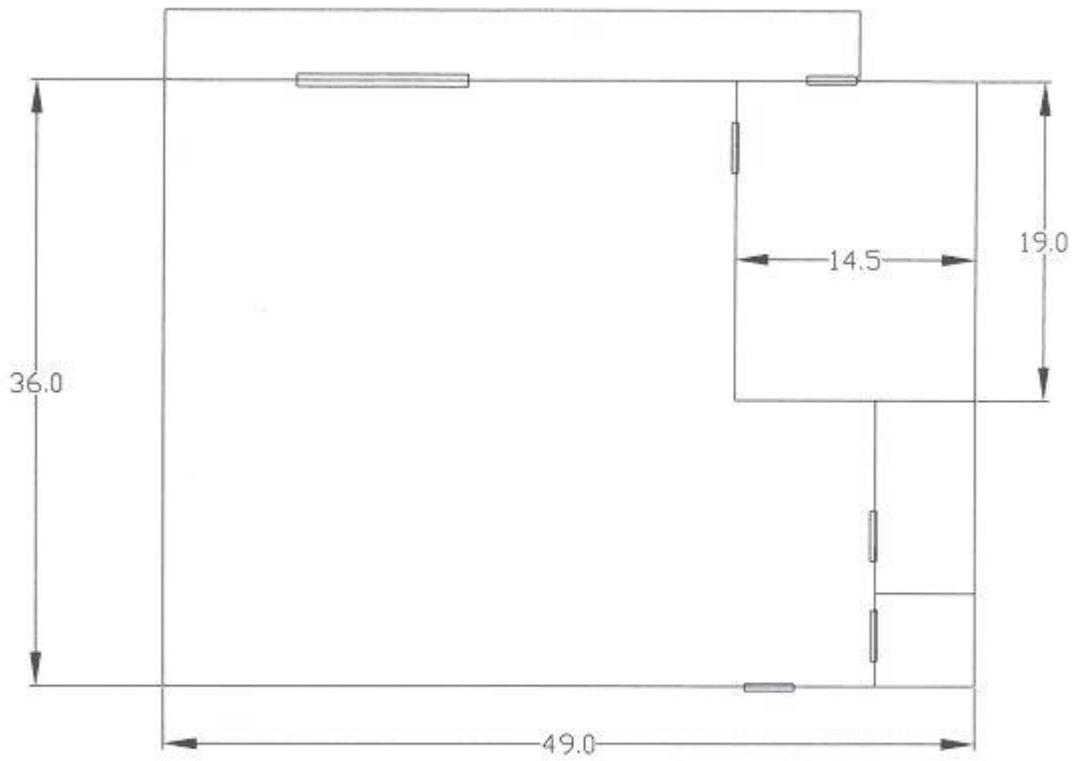
Available 9/6/2007. Property is owned by the Heath-Newark-Licking County Port Authority. It is part of the 57 acre main campus of the Central Ohio Aerospace and Technology Center, the former Air Force Base. The amenities include training/meeting room, daycare, food service, and recreation facilities.

Contact

Contact: Rick Platt
E-Mail: rplatt@hnlcpa.com
Phone: 740-788-5500

Other Information

No Other Information Available



BLDG #125 Warehouse
1750 Sq Ft.,
Office - 275sq ft.,

